

VAPORWARE V2[®]



*Quality Management System
and Data Logger*

Date: September 2020

INDEX

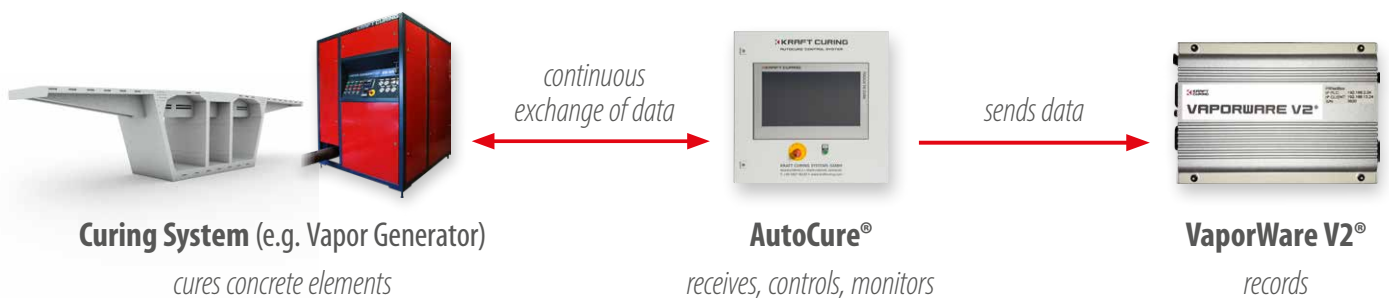
- 3** GENERAL
- 4** BATCH-REPORTING
- 5** TRENDING
ACTUAL VALUE
- 6** EVENTS
ALARMS/FAULTS
DATA ARCHIVING
- 7** FREE SELECTION OF THE
DISPLAY PERIOD
ADDITIONAL FUNCTIONS

For optimal control we recommend our compact VaporWare V2® quality management system, which measures, records, stores and prints all climatic curing data independently of a computer. Any Java-enabled device with a web browser (PC, tablet, smartphone etc.) can be used to access the VaporWare V2® software.

VaporWare V2® can be easily integrated into an existing network, so that protocols can be automatically printed on a network drive or printer. In this way you have your post-treatment protocols ready to hand at any time!

ADVANTAGES:

- ▶ Quick setup and network integration
- ▶ Curing data can be displayed, saved and printed out clearly and in colour
- ▶ Adaptability of language, temperature display and time steps
- ▶ Operating times of the entire curing equipment can be displayed
- ▶ Information on the curing costs can be determined
- ▶ Automated data output possible
- ▶ Protocols can be called up at any time and from any place



BATCH-REPORTING

- ▶ According to FDA guidelines according to 21 CFR Part 11
- ▶ Several different protocols simultaneously
- ▶ Automatic creation of PDF logs and backup on a Network drive

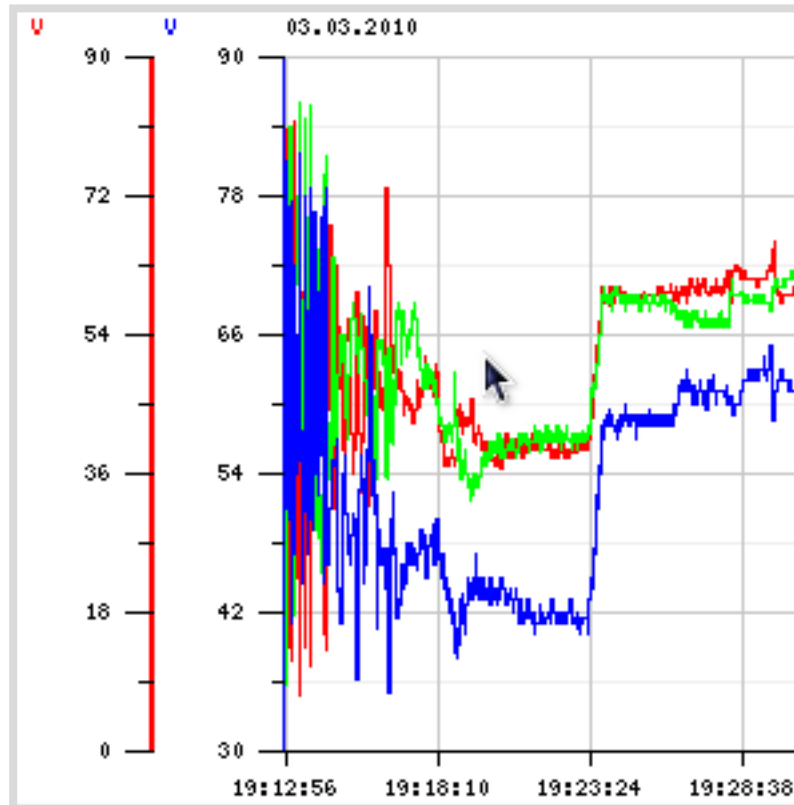
The following events and values can be defined for a protocol:

- ▶ Events including any number of parameters
- ▶ Alarms/faults
- ▶ Changes to setpoint specifications
- ▶ Changes to machine parameters
- ▶ Any number of freely configurable trends over the protocol period
- ▶ Any amount of header information on the title page at the start or end of the log (e.g. recipe name or the logged in users on the Panel)
- ▶ Time-controlled acquisition and difference formation of data values (e.g. display and difference formation of a kWh meter reading at 30-minute intervals)



TRENDING

- ▶ Standard trend for each recorded data value in the data archive.
- ▶ Each user can compile his own trends with each existing data value and save them under his own name.



ACTUAL VALUE

- ▶ Any data value can be selected as actual value.
- ▶ Automatic updating of the value.
- ▶ Display of the current value is also available on a user-friendly display via a smartphone.



EVENTS

An event is a recording of a situation signalled by the rising and/or falling edge of a bit. Any data value can be linked to any event as a parameter and recorded. For example, a temperature can be assigned to a fault message.

Any number of definable parameters can be recorded and displayed at the time of an event.

●	13.06.2018 08:25:42	Bewegung in Werkstatt	Temperatur im Keller: 21,4 °C
●	13.06.2018 08:25:38	Bewegung in Garage	
●	13.06.2018 08:25:35	Bewegung in Garage	
●	13.06.2018 08:25:28	Bewegung an Treppe	
●	13.06.2018 08:25:25	Bewegung vor Haustüre	ΔTempHaustüre: 13,8 °C

ALARMS/FAULTS

Alarms and faults are listed and handled separately and can be displayed as follows:

- ▶ All times of starting and ending alarms of a period.
- ▶ The last occurrence of a specific alarm.
- ▶ Any faults currently present in the system.

DATA ARCHIVING

- ▶ Unlimited number of data values (tags).
- ▶ Up to 100 values per second.
- ▶ Data type independent (string, integer, real, byte, bit, text lists).
- ▶ Special handling of setpoints, machine parameters and current values.

FREE SELECTION OF THE DISPLAY PERIOD

The data read in

- ▶ are divided into these segments: Trends, protocol, data archive, events, setpoint, machine value, actual value, alarms/faults.
- ▶ can be outputted in different time periods, such as: last hour, today, yesterday, this week, last week, this month, last month, this year, last year.
- ▶ It is also possible to freely define the display period.
- ▶ A zoom function in the Trends segment and in the data archive helps to take a closer look at conspicuous or interesting places.



ADDITIONAL FUNCTIONS

- ▶ Audit Trail
- ▶ Operating hours counter
- ▶ Language setting individually expandable (currently 13 different languages, including: Russian, Chinese and various European languages)
- ▶ Data export/import
- ▶ Status display
- ▶ User administration
- ▶ System backup + update